

Bath

Bath Township was organized on March 9, 1843. It was named Bath after Bath, New York, the birthplace of an early settler, Silas W. Rose. The first settler in the area was Ira Cushman who settled here in 1836 just east of Gunnisonville.

The land the village of Bath sits on was originally owned by Dustin Marr, a soldier of the Mexican War.

The village was developed as a railroad station after the railroad came through in the early 1860's. The depot was the first building built. It was followed by Israel VanOstran's tavern, and John Steffee and F. Kelly's store. A sawmill was added in 1864 followed by a gristmill in 1880.

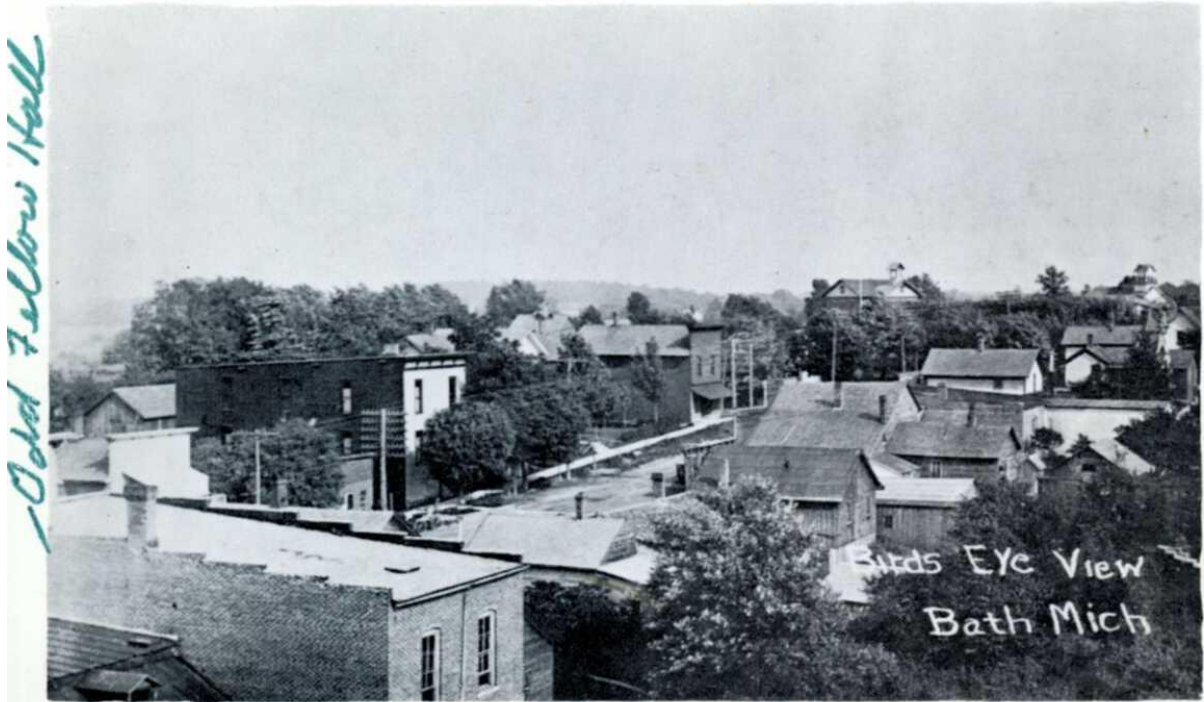


Bath Train Depot



Bath Gristmill

By the early 1900's it had two churches and a number of businesses including a wagon and carriage maker, brick and tile plant, and fruit evaporator.



Bath, Mich. 1910



Bath Post Office



East Side Main St., Bath, Mich. 1955



Main Street, 1966, Bath, Mich.

Much of the southwest part of Bath Township was uninhabited swamp land. The state of Michigan seeing little value in the land gave it to Michigan Agricultural College (now Michigan State University) in 1857.

Zachariah Chandler was a successful businessman, former mayor of Detroit, and U.S. Senator from Michigan. He believed it would be possible to drain the swamp land and turn it into good farm land. He bought over 3,000 acres from Michigan Agricultural College and the area became known as Chandler's Marsh.

Chandler invested time and money draining the swamp. Ditches were dug and water rerouted. He was able to turn most of the swamp into usable farm land.



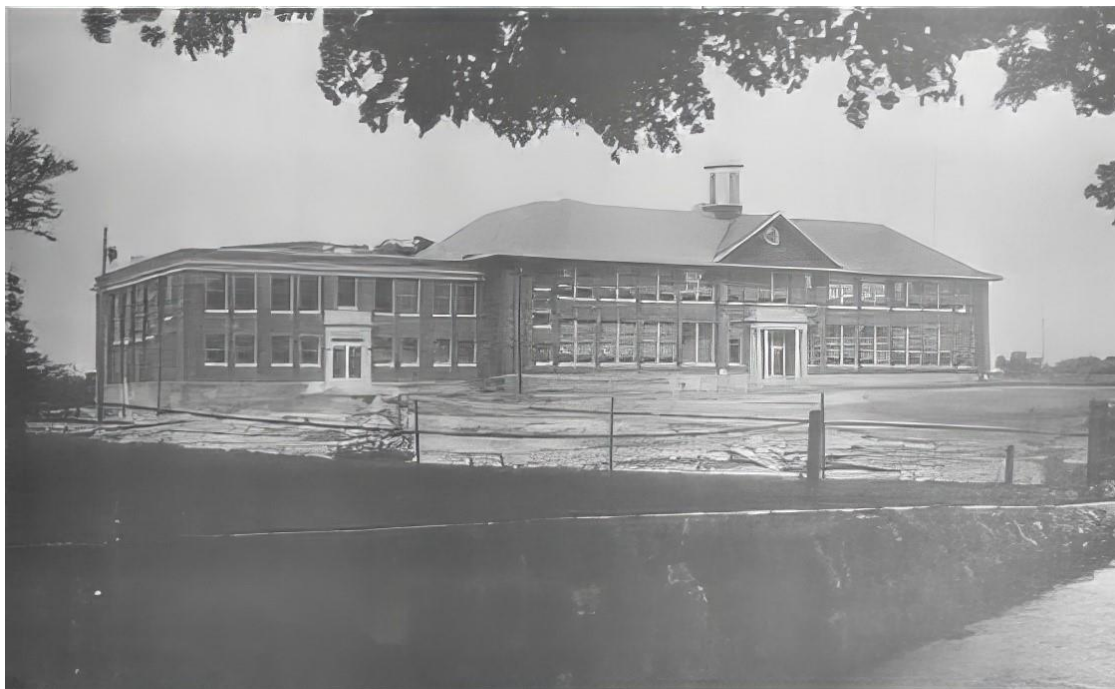


1873 Bath School Building

The first Bath school was in a log building built in 1858. It was replaced with a brick building in 1873. In 1921 Bath along with eight one-room schools combined to form the Bath Agricultural School. A new 18 room school was opened on October 9, 1922, as a K-12 school. It had a school lunch program and bused students in from the rural areas. It was the first school in Clinton County to provide student busing.



1922 Bath School Building



James Couzens Agricultural School - 1928

In 1928 the rebuilt James Couzens Agricultural School opened. It was demolished in 1975 having been replaced with newer buildings.