

TO APPLY HIMSELF



DIANNE M. POHL



MARK A. RADEMACHER



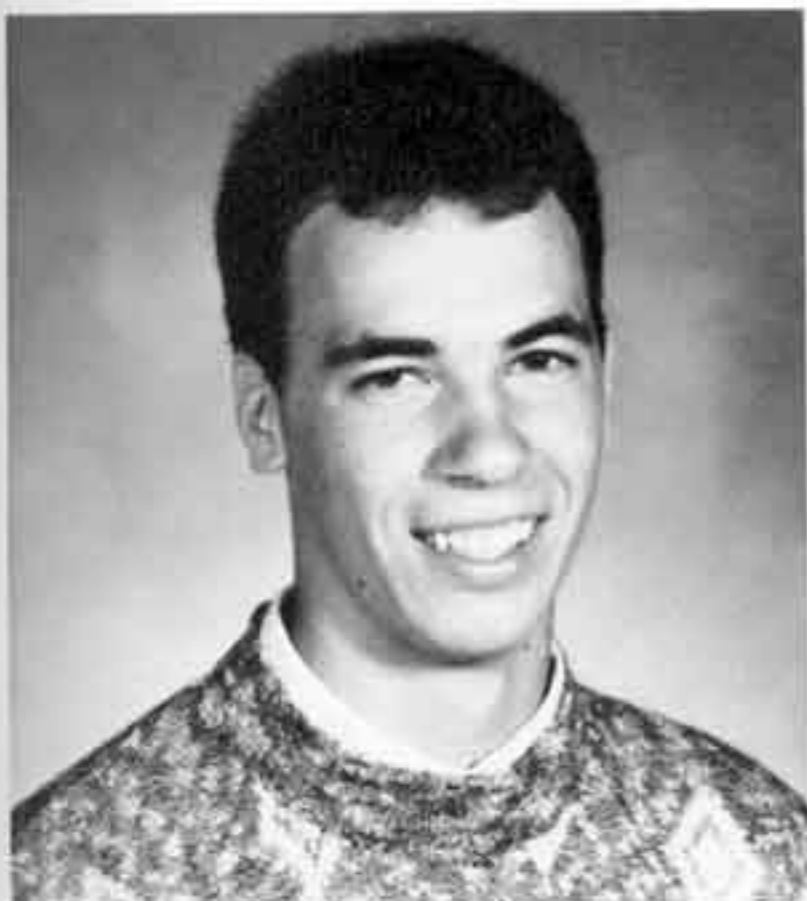
H. DALE REED



NO MRS. SMITH, IT CAN'T GET ANY WORSE.



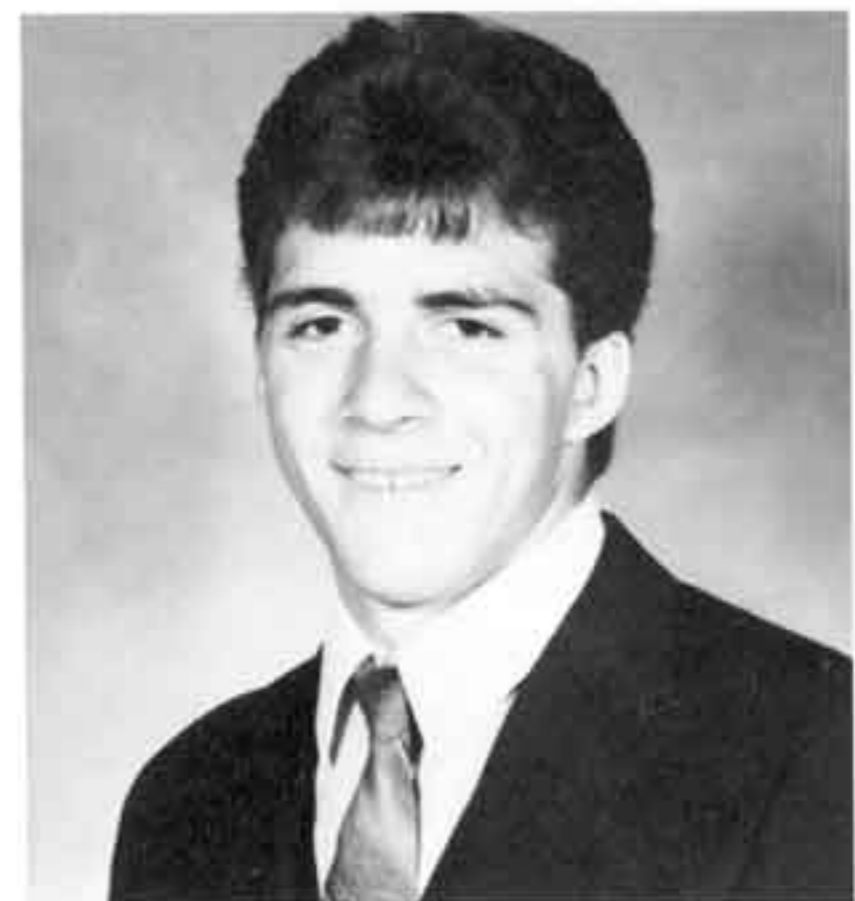
LARRY J. SCHAFFER



LEROY E. SCHAFFER



STEVEN M. SCHAFFER



WILLIAM S. SCHAFFER