



CHRISTINA GARCIA

A Latin beauty.



OMAR GREGORY

I'm the other one.

J-Hop Committee.



JANICE GILSON

Shoes? Pairs 'n pairs of 'em!!

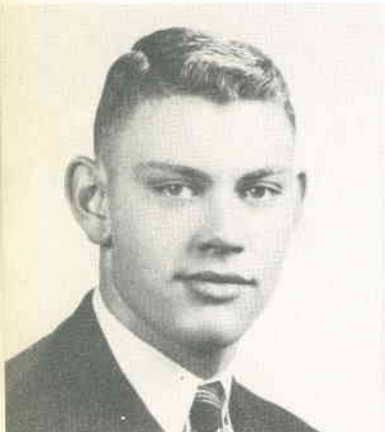
Dramatics Club 4; Senior Play Cast; F. H. A. 1; J-Hop Committee.



MARIE HALSEY

Whose sisters, brothers, uncles? Mine all mine!

Christmas Play 4; Spring Musical 4; Chorus 2, 4; Dramatics Club 3, 4; Senior Play Committee; Junior Play Cast; Sophomore Vice-President; Thespians 4.



FRED C. GREEN

"Big Fred".

Chorus 1, 2; Dramatics Club 3, 4; Senior Play Cast; Junior Play Cast; F. F. A. 1, 2, 3, 4; Student Council 1, 2; Basketball 3, 4; Football 1, 2, 3, 4; Track 1, 2, 3; Varsity Club 1, 2, 3, 4.



JEAN HAMMOND

Fred's little quarterback.

Christmas Play 2, 3, 4; Spring Musical 1, 2; Band 1, 2, 3, 4; Library Club 3, 4; Dramatics Club 3, 4; Senior Play Committees; Junior Play Cast; Junior Play Committees; Trumpet Trio 1, 2, 3, 4; Brass Sextette 1, 2, 3, 4; Gym Leader 3; G. A. A. 1; Thespians 4.



ELLIS GREGORY

Which one are you?

J-Hop Committee.