

MARY SNITGEN

"As a pal and classmate she is grand, And willing to lend a helping hand."

Chorus 1; Christmas Program 1, 2, 3, 4; Operetta 2, 3; Spring Concert 2, 3, 4; Ensemble 2, 3, 4; Wilsonaires 2, 3, 4; Wilsonian Staff 4; Vice Pres. 3; Student Council 3, 4; Latin Club 1, 2; French Club 4; Thespians 2, 3, 4; Dramatics 1, 2, 3, 4; Glee Club 2, 3, 4; Homecoming Comm. 4; Jr. Hop Comm. Jr. Play; Sr. Play Comm.



SHARON STEVENS "Sharie"

"This quiet gal is truly a pal,"  
Tumbling Team 4; Chorus 1; Christmas Program 1; Ushers Club 4; Dramatics 4.

KATHERINE STOCKWELL  
"Katie"

"She puts her troubles in a box--And sits on the lid."  
Chorus 1, 3; Christmas Program 1, 3, 4; Glee Club 4; Operetta 1, 3, 4; Spring Concert 1, 3, 4; Ensemble 3, 4; Rhythm Club 2; Homecoming Comm. 3, 4; Jr. Hop Comm.; Jr. Play Comm.; Sr. Play Comm.



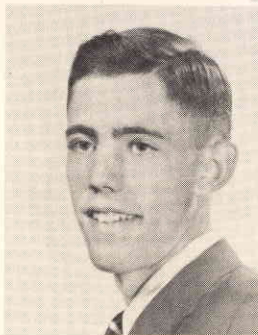
JACK A. SODMAN

"If there's trouble I'm not around---But I've been there."



LLOYD O. STEARNS

"Actions speak louder than words, So what's the use of talking?"  
Varsity Club 4; Baseball 3, 4; Cross Country 4; Chess Club 4.



CARL STRAHLE

"Looks bashful---Is he?"  
Football 2; Christmas Program 1, 2, 3, 4; Spring Concert 1, 2, 3, 4; "A" Band 1, 2, 3, 4; Latin Club 1, 2; Dramatics 4; Rhythm Club 3; Concert Band 2, 3, 4; Marching Band 1, 2, 3, 4.



DONALD E. STEVENS "Don"

"If I had the wings of an angel, Wouldn't I look silly?"  
Football 1; Basketball 1; Jr. Hop Comm.



ROBERTA SUCHEK

"Ever earnest and quiet is she, Amiable also, and nice as can be."  
Library Club 4; Sr. Play Comm.

