



LEWIS BUSHAMP

"The wisest man could ask no more
offate than to be modest, manly,
and true."

Spring Concert 3,4; "A" Band 2,3,
4; Concert Band 2,3,4; Marching
Band 2,3,4.



MARCIA COWLES

"My heart is changeable, you see;
Variety's the thing for me."
Christmas Program 2; Christmas
Musical 2; "A" Band 1; Treasurer
1; Science Club 3; Latin Club 1,2;
Dramatics 2,3,4; Rhythm Club 2,3;
Concert Band 1; Marching Band 1.



JEANNE CAMPBELL

"She would stop St. Peter's roll call
to ask a question."

Chorus 1,2,3,4; Christmas Program
1,2,3,4; Operetta 2,3; Spring Con-
cert 2,3,4; Ensemble 2,3,4; Wilson
Torch Staff 4; French Club 3,4;
Rhythm Club 1,3; Glee Club 2,3,4;
Jr. Hop Comm. Jr. Play Comm. Sr.
Play Comm.

LOIS JURY CHANT

"It isn't so much what you say
Nor exactly what you do.
The thing that makes you what
you are
Is the honest-to-goodness you."
F.H.A. 2,3; Library Club 2,3; Jr.
Hop Comm. Homecoming 3.

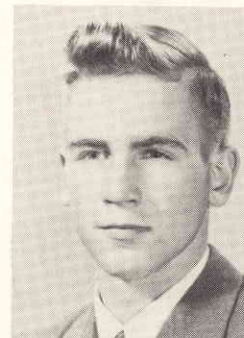


*Deceased
1971*

LARRY CHURCHES

"A man among men But usually
among women."

Football 1,2,3,4; Varsity Club
2,3,4; Baseball 1,2,3,4; Track
2; Operetta 2; F.F.A. 1,2;
Homecoming Comm. 3,4; Jr.
Play Comm. Senior Play.



KARLIS V. DAKERS

"Kind of shy but loads of fun,
He has the fair sex on the
run."

Varsity Club 3,4; Basketball 1,
2,3,4; Wilsonian Staff 4; Stu-
dent Council President 4; Sci-
ence Club 4; Boys' State; Sen-
ior Play Comm. Board of Ath-
letics.

DOROTHY COLANDO (Dot)

"A gal who blushes is better than
one who turns pale."

Chorus 1; F.H.A. 2; Science Club
4; Ushers Club 3,4; Library Club 3,
4; Latin Club 1; Rhythm Club 2,3;
Homecoming Comm. 4; Jr. Hop
Comm. Jr. Play Comm. Sr. Play;
Sr. Play Comm. Hall Monitor 3,4.



ELAINE ANN DAMON

"Not too short, and not too tall;
Pretty and sweet and loved by all."
Chorus 1; Christmas Musical 1;
Rhythm Club 2,3; Jr. Play Comm.