

THOMAS E. GOFF (Tom)
 "Tom's a ladies man, right to the
 core;
 If you don't believe us, just follow
 him more."
 Football 1; Homecoming Comm. 3;
 Jr. Hop Comm.



LINDA HALSEY (Linney Lou)
 "Sugar and spice and everything
 nice.
 One of these days she'll be covered
 with rice."
 Rhythm Club 2,3; Homecoming
 Comm. 3,4; Jr. Hop Comm.



DONNA GOVE
 "Busy at the typewriter
 Busy as a bee.
 She's the model office girl
 It's plain to see."
 Christmas Program 2; Operetta
 2; "A" Band 2; Ushers Club 4;
 Library Club 3,4; Rhythm Club
 2,3; Concert Band 2; Marching
 Band 2; Jr. Play Comm.



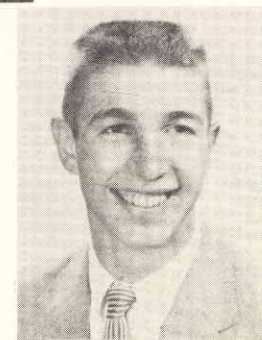
SHARON M. HEINRICH
 (Sherrie)
 "This girl has personality plus,
 And Sharon is liked by all of
 us,"
 Spring Concert 3; Ensemble 3;
 Library Club 3,4; Rhythm Club
 3; Homecoming Comm. 3; Jr.
 Play Comm.



PATRICIA GREWE (Pat)
 "She's always pleasant to see,
 Cute as a bug's ear, busy as a bee."
 Spring Concert 1; "A" Band 1; National
 Honor Society 3,4; Wilsonian
 Staff 4; Student Council 2,4; Ushers
 Club 3,4; Library Club 3,4; Thes-
 pians 4; Dramatics Club 3,4; Rhythm
 Club 2,3; Concert Band 1; Home-
 coming Comm. 3,4; Jr. Hop Comm.;
 Jr. Play; Jr. Play Comm.; Girls'
 State; Sr. Play Comm.



LEO HENNING
 "The looks, the height, the build,
 the tan;
 All together -- What a Man!"
 Football 1,2,3,4; Varsity Club 3,4;
 Chorus 2; Christmas Program 2;
 Rhythm Club 3.



NEIL HALL
 "To worry is folly,
 Let's smile and be jolly."
 "A" Band 2,3,4; F.F.A. 1,2,3,4;
 Concert Band 2,3,4; Marching Band
 2,3,4.



LOIS HILL
 "Eyes full of laughter,
 Lips full of song."
 Dance Orchestra 3,4; Christmas
 Program 1,2,3,4; Operetta 3; Spring
 Concert 1,2,3,4; Ensemble 2,3,4;
 "A" Band 1,2,3; Library Club 4;
 Rhythm Club 2,3; Glee Club 3; Jr.
 Hop Comm.

