

JEAN ROBINSON



"Who's A's? Mine all mine!"

MUNA; National Honor Society 3,4; Music Booster Scholarship 2; F.N.C. 4; F.T.A. 2,3; Senior Play Committee; Junior Play Cast; Homecoming Committee; Senior Band 0-1,2,3,4; Pep Band 2,3,4; Wilsonaires 3, 4; Girls Ensemble 3; J-Hop Committee; Senior Prom Committee.

GARY SCHAFER



"I could go a long way in this world if I knew which way to go!"

F.F.A. 3,4.

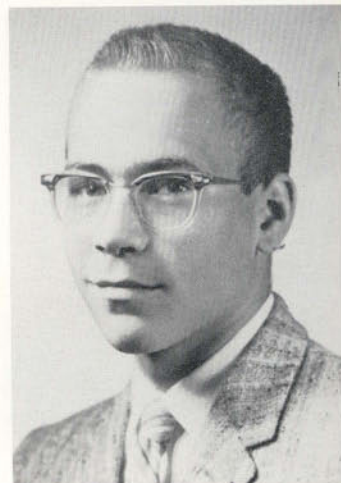
CYNTHIA RUSSEL



"Eat drink and be merry for tomorrow we may have a test."

Dramatics Club 2,3; Glee Club 2-4; Wilsonaires 4; Senior Play Cast; Junior Play Committee; G.A.A. 3; Senior Prom Committee.

CHARLES SCHNEIDER



"Whose the greatest man in the world, and why am I?"

Library Club 3,4; Dramatics Club 4; F.F.A. 2,3; Senior Play Cast; Winter Concert 2.

NANCY SACKRIDER



"Her smile is the sweetest that ever was seen."

Chorus II.

TERRY SCRANTON



"Why take life seriously, you'll never get out of it alive."