



Clinton County Historical Society

P. O. Box 174

Saint Johns, Michigan 48879

THE CLINTON INDEPENDENT

December 1986

**Come
celebrate
the good
old days.**



VICTORIAN CHRISTMAS

The tree is an aged cedar, cut and hauled from a nearby swamp and decorated with vintage ornaments, many home-made and others, second-hand. The tree that awaits visitors at Paine-Gillam-Scott Museum on Maple Street in St. Johns is typical of Christmas trees used by Clinton County pioneers.

The garlands that deck PGS halls are last summer's flowers. The toys on display reflect Christmas-past.

That's the setting and we invite you to visit PGS this holiday season. For a listing of activities see flyer attached.

CCHS Reprints Book

THE PAST & PRESENT OF CLINTON COUNTY

As a Sesquicentennial project, CCHS will reprint the beautiful "Past and Present of Clinton, County, Michigan," originally published in 1906. This book also includes extensive biographical information about the families of Clinton County.

The pictorial book was written by Judge S. B. Daboli who was assisted by D. W. Kelley, a local attorney.

In addition to the original text, CCHS archives librarian Wilma Sowle has compiled an extensive index of the book, making this an even more desirable book to own.

This book is being offered by the society at a pre-publication price of \$30 including tax. Publication is set for March 1, 1987. After that date the book will be offered at \$40.

ORDER YOUR BOOK TODAY and if you want it mailed there is a \$5 postage fee.

Mail- in coupon on enclosed insert....



THE GRAND TRUNK RAILWAY SYSTEM.

St. Johns, Michigan.

BOOKLET REPRINTED

"Headlight Flashes," produced in 1896 by the Grand Trunk Railway System, "through a new modern method of printing," made it possible to show the outside world the beauties of smaller towns and their great advantages for homes and manufacturing centers. It was said at the time that "believing the best is none too good for this beautiful little city, the loyal citizens of St. Johns" appreciated the efforts of the publisher.

Several cities along the railroad were written up in that manner with the

booklets picturing schools, churches, homes, businesses and manufacturing. It included pictures of prominent businessmen with brief biographical sketch.

This 20-page booklet is fascinating and the reproduction is offered by CCHS through Paine-Gillam-Scott Museum. It sells for \$3 and may be purchased at the museum, St. Johns Chamber of Commerce office, Treasure Chest on N. Clinton Ave. in St. Johns; or, send \$4 (includes postage) to CCHS, Box 174, St. Johns, Mi. 48879

Excerpted pages from this booklet on next page; and on last page of this newsletter. More excerpts will follow in upcoming months.

HEADLIGHT FLASHES.

A periodical devoted to the interests of railroads and railroad centers.

CHICAGO RAILROAD PUBLISHING CO.,

PUBLISHERS.

H. L. HAY-GER, MANAGER AND EDITOR.
Room 17, Third Floor, 85 1/2, CHICAGO, ILL.

PRICE 25 CENTS.

The modern methods of engraving and printing have made it possible to

produce a work of art of this nature, showing to the outside world the beauties of the smaller towns and their great advantages for homes and manufacturing centers. A few years ago it would have been impossible to have produced a work of this nature without such an enormous expense as to have prevented it, even if the old methods of engraving had been as artistic as the half tone pro-

cess. This edition of HEADLIGHT FLASHES represents St. Johns from an editorial standpoint, there being no paid matter in the book. A special effort has been made to have the work as perfect as possible in all its details, believing that the best is none too good for this beautiful little city, and that the loyal citizens of St. Johns would appreciate the efforts of the publishers.

ST. JOHNS, MICHIGAN.

SITUATED as it is, in the midst of the finest agricultural section in Michigan, St. Johns, with its population of 3,500 people, is one of the most prosperous towns of its size in the central states.

At an early day it was made the judicial seat of Clinton county, and its growth has been constant. Nature endowed Clinton county and it remained for the sturdy pioneers to develop it into a prosperous farming region, and, with this development, the important village of St. Johns came to thrive and prosper as a most natural result.

The stranger who now views St. Johns for the first time can but be most favorably impressed with its metropolitan aspect. Its main thoroughfare, traversed on either side by beautiful business blocks of brick; its magnificent hotel, not its equal in size in central Michigan; its broad streets, with graveled roads hard as macadam, and its residence streets, with a superabundance of luxurious shade trees on either hand.

With the development of this section as an agricultural center, came the demand for a market for the vast products of the forests, and men with brain and capital supplied that market. The St. Johns Manufacturing Company, nearly thirty years ago, began transforming the timber of

Clinton county into merchandise, and with success awarding their business venture, became one of the largest manufacturing institutions in the west, employing several hundred men, thus contributing, in a great measure, to the prosperity of the town. Other manufacturing interests, aside from the one mentioned above, are now doing a thriving business and

for all points west and south, thus enabling St. Johns shippers to receive the lowest possible rates. The passenger train service is fully adequate and trains in and out are at sufficient intervals to accommodate not only the residents of the town, but the traveling public as well.

The residents of St. Johns are progressive, intelligent, and are in touch with the world. Here may be found the culture and refinement one would expect to see in a large city. Literary clubs, reading circles and kindred associations are numerous, and a ladies' library of several thousand volumes is well patronized.

The school buildings of St. Johns are handsome edifices, being commodious and well lighted. The high school building was erected at a cost of \$30,000 and has a seating capacity of 600. The school system is on a par with that of any

Michigan town, and the school board have at heart the most important factor of modern civilization, viz: free education, and have engaged as instructors none but the most competent. Every thing along the line of advanced thought and research is made a specialty, and the students graduating from the St. Johns schools are fitted to fill responsible positions of honor and trust and to fulfill the duties of citizenship.

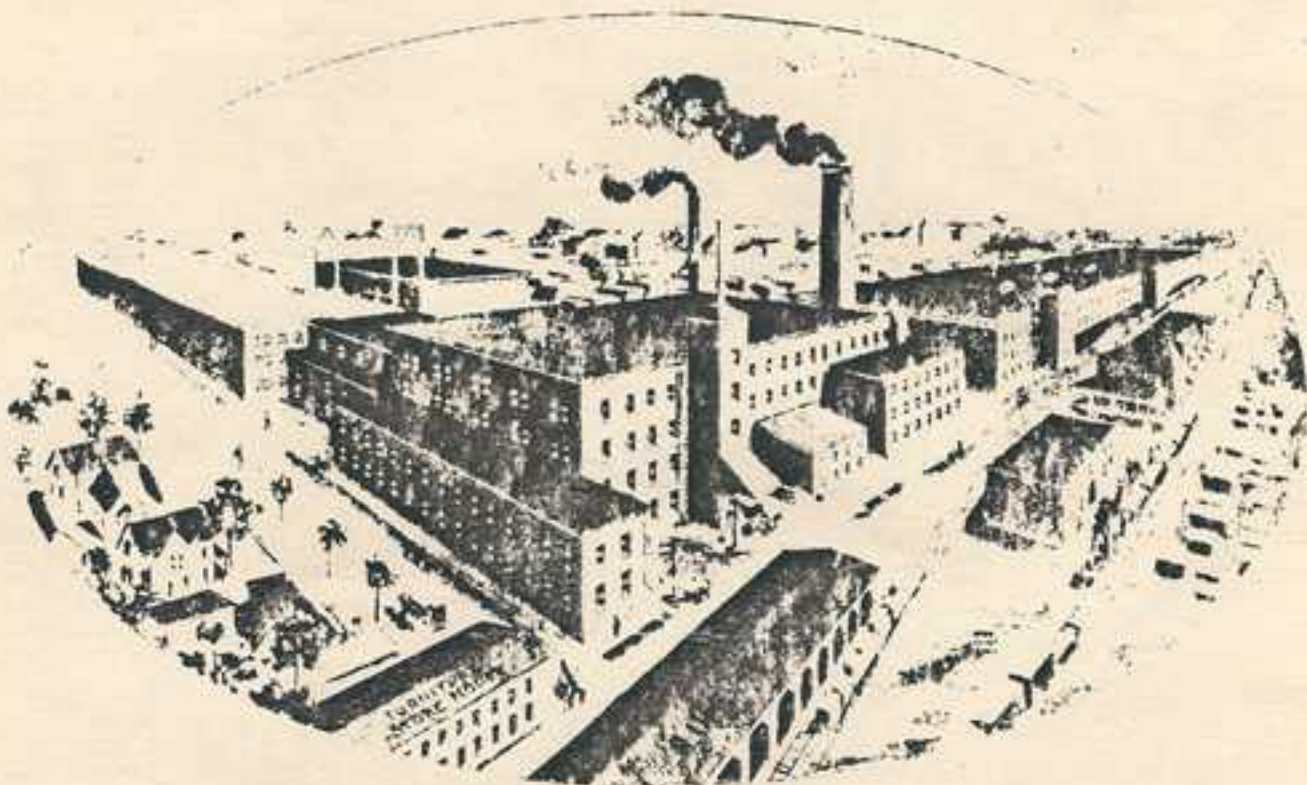


COURT HOUSE

give employment to a large portion of the inhabitants.

The Detroit, Grand Haven & Milwaukee Railroad, with its connecting lines, afford St. Johns the best possible shipping facilities, as it forms a direct connection with the lake ports at Detroit, and by rail to all points on the seaboard, and by boat to Chicago, Milwaukee and other ports on Lake Michigan from Grand Haven. Direct connections are also made at Durand

BEADLIGHT FLASHES.



The St. Johns Manufacturing
Company plant...largest
table factory in the world

CLINTON COUNTY HISTORICAL SOCIETY
BOX 174
ST. JOHNS, MICHIGAN 48879

St. Johns, MI.
PERMIT
No. 104
Non-Profit Org.
U.S. Postage
PAID



What's happening

GENEALOGY DIVISION

- Dec. 1: Christmas party, Capitol Savings, St. Johns, 7:30 p.m.
- Jan. 5: Meeting to discuss goals and problem solving for genealogists. Capitol Savings, St. Johns. 7:30 p.m.
- Feb. 2: Family history tapes presented by Janet Tiedt. Capitol Savings, St. Johns, 7:30 p.m.
- March 2 Michigan history by Arlene Lounds, Capitol Savings, St. Johns, 2:30 p.m.
- April 6 Election of new officers; & program by Janet Snyder on Gazateer & Directory. At the Archives, DeWitt Charter Township Hall, 7:30 p.m.

ARCHIVES: At DeWitt Township Hall, Brook Road, DeWitt (one block southeast of U.S.27 & State). Hours: 8 a.m. to 3 p.m. on Mondays through Wednesdays

CCHS GENERAL MEMBERSHIP MONTHLY MEETING

- Dec. 18 7:30 p.m. at Paine-Gillam-Scott Museum. Last year's program was a "dress rehearsal" for this year's event when we present, with your help, "A Rural School Christmas." Also, annual cookie exchange. Bring cookies and copies of your cookie recipe to exchange

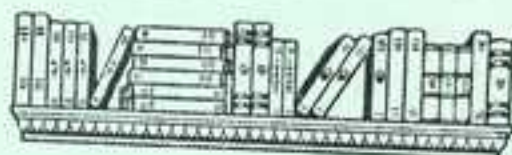
GIFT CERTIFICATE

copy of the reproduction of the 1906 "Past & Present of Clinton County, Michigan" has been reserved in your name by _____ <
will be available for you by March 1987.
Clinton County Historical Society
Box 174, St. Johns, Mi. 48879

PAINE GILLAM SCOTT MUSEUM

- CHRISTMAS AT PGS: See flyer attached for listing
- Dec. 29 PGS board meets at museum at 7 p.m.
- Jan. 8, 1987 PGS board meets at museum at 6 p.m.
- April 25, 1987 Watch future newsletters for details on our "50th Year Remembrance of Clem Sohn" A special display at PGS that month; remembrance observance at Fowler cemetery at 1 pm with reception at Most Holy Trinity Hall at Fowler at 2 p.m.

Rare Gift



To History Book Committee
Box 174, St. Johns, Mi. 48879

Reserve _____ copies of "Past & Present of Clinton County" at \$30 each. Enclosed is my check for \$_____. Please notify me when book is ready for pickup_____. I want my book mailed and have enclosed \$5 extra (per book) for postage/handling.

Name:
Address:
City, State
Telephone:

1986 ——— 8th Annual

"V I C T O R I A N C H R I S T M A S"

Paine - Gillam - Scott MUSEUM
West Side of Courthouse Square
ST. JOHNS

Sun. Dec. 7th thru Wed. Jan. 7th
HOURS: Sun. 1-5 p.m. & Wed. 2-8 p.m.

C l o s e d Dec. 24th & Dec. 31st
OPEN Saturdays Dec. 27th & Jan. 3rd

Group Tours by Reservation
224-2894 or 224-7402

Wednesday Evenings
CANDLELIGHT
with Special Music
7p.m. - 8p.m.

Thurs. Dec. 11th, 6 - 9p.m. THE ARTS OF CHRISTMAS

CHRISTMAS EXHIBITS

Turn of the Century - Miniature House

CANDLELIGHT
with Special Music
7p.m. - 8p.m.

Thurs. Dec. 11th, 6 - 9p.m. THE ARTS OF CHRISTMAS

CHRISTMAS EXHIBITS

Turn of the Century - Miniature House

Royal Ruby - Depression Glass

"Rural America"

Plate & Ornament Collection
Lowell Davis, Artist

Victorian Christmas Tree

Dolls of Remembrance

One Horse Cutter

Lionel Trains

View A Christmas Past

The Clinton County Historical Society

For SALE: Tatted Snowflakes & Bells
Felt Christmas Ornaments