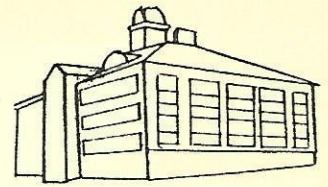




1871-1998

# Clinton County Trails



June 22, 2000

Published by: **Genealogists of the Clinton County Historical Society**  
P.O. Box 23, St. Johns, MI 48879

**Published Quarterly**

**JUNE 2002**

**Volume 17, Number 2**

## **HISTORICAL SOCIETY**

President . . . . Jeanne Temple  
V. President. . . Maralyse Brooks  
Secretary . . . . Myrna Van Epps  
Treasurer . . . . Kim Sperry

## **GENEALOGISTS**

Chairman . . . . . Michael Pease  
Vice Chairman. . William Serviss  
Secretary . . . . . Myrna Van Epps  
Treasurer . . . . . Carole Henry

## **MUSEUM**

Catherine Rumbaugh  
*Director*

## **ARCHIVES**

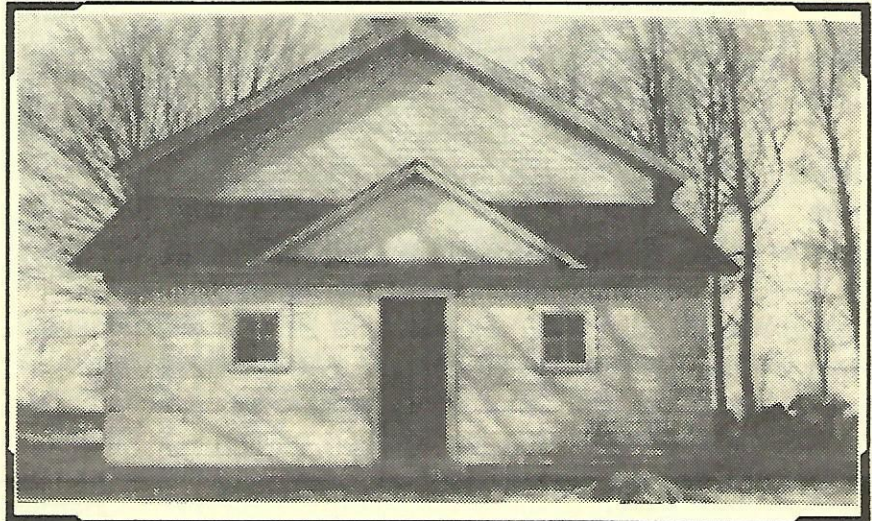
Myrna Van Epps  
*Archivist*

## **NEWSLETTER**

Myrna Van Epps  
Kim Sperry  
*Co-Editors*

## **CONTENTS . . . . . PAGE**

|  |    |
|--|----|
| Monroe School pictures . . . . .         | 13 |
| Merle Beach School . . . . .             | 14 |
| Plowman School . . . . .                 | 15 |
| Parker School . . . . .                  | 15 |
| Interview of Amy Smith (cont.) . . . . . | 16 |
| Elsie Post Office . . . . .              | 17 |
| South Riley & Grove School . . . . .     | 18 |
| Kinney/Kinne History . . . . .           | 22 |
| North Eagle School . . . . .             | 23 |



**Monroe School - ca 1915**  
**District #4, Howe Road, Eagle Township**



**Monroe School - ca 1900**  
**Tall student in back is Rosa Patrick**  
**Teacher is Mattie Lowell, back right**



## Monroe School - ca 1924

Partial school roster

**Richard Dickie, Ed Huhn, Bill Patrick, Bud Strong, Harold Patrick, Wilma Irwin, Fern Bankey, Stella VanAmburg, Winifred Irwin, Esther Huhn, Mable Myers, Margaret Myers, Alice Bankey, Agnes Lietzke, Blanche Bankey, ? Bowerman, Jessie Martin, Lewis Meyers, Gerald Huhn, Leonard Huhn, Ralph Martin, Herman Huhn, & Ivan VanAmburg.**

Monroe School pictures and information was provided by Georgia (VanAmburg) Haines.

**Georgia (VanAmburg) Haines** attended Monroe School 1931-1936. Her father, **Clarence William VanAmburg**, went there ca 1909 to 1917. **Rosa (Patrick) VanAmburg**, her grandmother, also attended Monroe School. Georgia writes, "I think the building as I knew it was the same as the one my grandmother attended, except that it had an addition on the front to make a place for putting our boots and hanging our coats. We called it the "anteroom". On one end of it there was a big coal bin for storing coal for the furnace." See Georgia Haines's pedigree charts elsewhere in this issue. She also submitted a chart tracing her lineage five generations back to Aaron and Elizabeth Moses both born ca 1785.

## A MAMMOTH ELM

The Clinton Republican, 16 Feb 1905

**Orba Schanck** went to Duplain Monday and brought in two logs from a large elm cut on the old **B. F. Young** farm, the largest of which measured 56" in diameter at the small end, and was 12' long and scaled 2,028 feet. The other log was 14' long, 54" in diameter at the small end and scaled 2,104 feet. These logs would weigh about 16, 000 pounds each. There were several cords of wood left in the tree.



### Merle Beach School

May 5, 1918

District #3, Section 8, Olive Township

Original photo owned by Dorothy Cressman



### Merle Beach School - ca 1923

Courtesy of Kim (Howe) Sperry

Back l-r: **Leo Ash, Almond Cressman,**

**? Cline, Raymond Sperry, Henry Sperry**

3rd: **Erma Bauer, Mrs. Jones, Teacher,**

**Bernadine Devereaux, Cleo Moinet, Evelyn Lyons,**

2nd: **?, ?, ?, Betty Moinet, Dorothy Stevens, ?, Arnold Waltz**

Front: **Lloyd Martzke, ?, ?, Carl Geller, Norm Geller, Bennett Ash, Clarence Waltz**





**Plowman School - 1948 or 1949**  
**District #7, Section 13, Riley Township**

Donated by Rowlan Smith

Front: ? Cornell, Richard Hopp, ? Cornell

2nd: Barbara Cornell, Gerald Smith, Harold Smalldon, Paul Plowman & Janet Stoy

Back: Dale Huguelet, Phylis Plowman, Sharon March, Rowlan Smith & Jack Smalldon

**Parker School - ca 1914**  
**District #8 Frl., Sect 1, Bingham Township**

**Postcard to Claude Bowen**

Donated by Myrna VanEpps

Parmer Lapham, Fran Moore, Sam Sherwood, Alice (Dobson) Palmer, Tera Burnham, Berl (Pilmore) Birdsley, Gladys (Pilmore) Rhynard, Chalmer Moore, Ted Moore, Doris VanDuser, Mable (Moore) Fero, Nettie (Dobson) Wilson, Margaret (VanDuser) Smith, Claude Pilmore, Lida (Knight) Hyler, LeRoy Lapham, Gladys Moore, Olive Knight, clare Moore, Gale Lapham, & Nell Church, teacher. (Identification taken from photo published in the Clinton Co. Republican-News, Centennial Edition, 28 Jun 1956.)





## Amy (Birmingham) Smith

Interviewed by Jeanne Temple on 17 June 1983  
(edited version)

(con't from the March Newsletter)

The Richards School was out of the corner of the Hudson Farm. At the time I went to school, it was known as the Richards School. Far as I know, that was the first school, in the township. There was one in Ovid but it was a fractional district, so our school was district No. 1. Later on it was called the Avery School. When my brother, Ira, started school Frank Smith was the school teacher there. He was my father-in-law. His father was **N. L. Smith** and had moved to Shepardsville in 1883 and father Smith was 20 years old at that time. He went out teaching school, and when Ira started school he was teaching at the Avery/Richards School. **Lillie Birmingham** went to school to him the next year. Later on father Smith taught at the Shepardsville School [Dist. #3, 1894] which was across the road from **Clare Alderman's** store at that time. There was a sidewalk from that corner down to the village where it is now. I can remember that sidewalk very well

My mother went to school at the Wilson School [Dist. No. 6] when they moved from Farmington to South Ovid. They had just half logs cut for seats. My grandfather Scudder bought us either 20 or 40 [acres] just west of the South Ovid Cemetery. It's part of the **Wyrick** farm now. Since I can remember the log house that they lived in was there. It's gone now. Grandmother Scudder brought huckleberries from Farmington and scattered them out in the swamp between the house and the cemetery.

Later, when the family moved to Shepardsville, first, their house was at the top of Bensinger hill on the south side of the road at the top of the hill right at the corner of that field. Then they moved it to Shepardsville. When they moved the house, Uncle Dar had had the operation on his leg. It was probably a cancer of the knee, but I don't know for sure--either cancer or tuberculosis. He was in

bed when they moved it.

My father and mother, when they were married, she had a white dress with pink flowers in it. I remember seeing pieces of that dress. She was born in 1856 and they were married in 1878, so she was 22. She had worked for **Dr. [L.O.] Ludlum** when he lived over the north store in Shepardsville.

We were on the farm when Paul died, but between that time he had worked for other people. In 1930 we came back here to Ovid and lived through the winter but in the spring moved to Shepardsville to the little house again. Then about 1935 Paul went to work for Dar Scudder selling implements. At Thanksgiving time in '36 we moved back to Elsie where he worked for **Boyd Williams**. I worked part-time in the Byerly Store. We stayed there until 1939 when we came back to Shepardsville. I kept on working part-time until '41. In Elsie at that time we lived, first (can't remember the name of the street) but moved up to Main Street where **Sid Keys** now lives.

When that was sold, we moved out to the north part of the big house that belongs to **Merle Green** on South Main Street. It had been a Baker house. She (**Jennie Baker**) was living and was married to **Merle Temple**. We lived in the north part of that. I cleaned it up because it had been used as sort of a granary-chicken coop. I did a great deal of cleaning to get it cleaned up. Later we moved back to Shepardsville because Paul's parents were both sick. We moved back to the little house but we stayed with them except weekends through the winter.

Charlotte and Lloyd were married August 26, 1939. They stayed with us or apartments in Lansing until he and went into the service in 1942. Charlotte, as soon as he was established, followed him around in service.

Paul worked for Dar Scudder, and then **Williams**, and then **Gower**. We moved back down to the farm in 1940, I believe. He sold implements and drove truck for Gower

"Dar" was a nickname for **Darwin H. Scudder**. He had the middle store in Shepardsville for many years. Finally, he rented



it to **Eddie Lattimer** and later sold it to Eddie Lattimer. Uncle Dar had the first heavy wagon to drag around the country and sold groceries from that wagon. It was just a common horse and wagon. Then he rented and started the store and bought it.

The store on the south , the farthest back as I remember, was **Frank Cleveland's**. He had the post office in that south store, later sold to **Aldermans** and moved to the north store. He had the post office in the north store. Later it was **Frisbie's**. The south store had dry goods and groceries and meats and milk; and Uncle Dar had groceries and candy, cigars, and for awhile made and sold ice cream. The north store, when Mr. Frisbie owned it, it was a hardware and post office.

There was a very active railroad depot in Shepardsville. When Paul and Oliver were youngsters, the station agent roomed at their place. I think his name was **Quinn**. Oliver learned his trade there and was agent there. Paul learned of him. The next man who came there was Smith. I think his name has George Smith, **George and Ethel Smith**. No relation. They came from Owosso.

There were stockyards in Shepardsville. I guess they belonged to the railroad. Different men brought in stock, **Bart Shepard** and others. There were two different elevators there. Both burned. It was in 1933, I think, that the second one burned. I know that everybody turned out to pump water and carry water and fight fires.

I can't tell you exactly when the station closed. I remember when **Dr. Osterheld** was hit there--a very stormy winter day [14 Feb 1923]. Paul was standing on the front steps of the Alderman store and saw the accident. He was the first one on the job and George Smith was station agent. **George Youngs** was driving, but the storm was so bad that you couldn't see or hear. George Youngs didn't get out of the car. He stayed in and he came out alive, but hurt. Dr. Osterheld opened the door and was trying to get out and was killed. He had been to **Ruth Hazel Olson's**. On his way back from Olson's they had to go north. They

had to go from Shepardsville Road to Hollister Road. M-21 had not been built.

I remember when '21 was built. There were German prisoners from WWI in the encampment which was south of Ovid on the east side of the road where that motor court is now. They used German prison labor.

## ELSIE POST OFFICE

From program printed for the Post Office dedication on June 7, 1962

Records of the Post Office Department disclose that a Post Office was established at Elsie, Clinton County, on May 14, 1857

| Former Postmasters .....     | Date Appointed |
|------------------------------|----------------|
| Franklin Tillotson .....     | May 14, 1857   |
| Job D. Sickels .....         | Aug. 31, 1861  |
| Ichabod Chase .....          | Oct. 9, 1866   |
| Job D. Sickels .....         | Dec. 31, 1867  |
| Elijah W. Cobb .....         | Oct. 23, 1878  |
| Lucien Clark .....           | Nov. 2, 1885   |
| Joseph E. Craven .....       | Mar. 28, 1889  |
| Thomas W. Snelling .....     | Jun. 30, 1893  |
| Berton M. Wooley .....       | Jun. 7, 1897   |
| Ebenezer A. Litchfield ..... | Feb. 23, 1905  |
| Charles Snelling .....       | Jul. 21, 1913  |
| Harry F. Brainard .....      | Mar. 1, 1916   |
| J. Gail Show .....           | Jun. 5, 1924   |
| Clarence S. Goodrich .....   | Aug. 1, 1936   |
| James V. Baese .....         | Feb. 28, 1961  |

### Post Office Staff - 1962

|                            |                    |
|----------------------------|--------------------|
| James V. Baese .....       | Postmaster         |
| Herbert A. Betts, Jr. .... | Clerk              |
| Gertrude Conklin .....     | Clerk              |
| Jack E. Hawes .....        | Rural Carrier      |
| Paul C. Plotner .....      | Rural Carrier      |
| Dale C. Levey .....        | Substitute Carrier |
| Emerson A. Dunham .....    | Substitute Carrier |
| Harold A. Bond .....       | Contact Carrier    |



## SOUTH RILEY SCHOOL

Dist. #4 Frl., Riley Twp.  
1922-1923

Barnard, Margaret  
Beach, Dennie  
Beach, Leroy  
Cressman, Aaron  
Cressman, Errol  
Cutler, Harold  
Cutler, Martha  
Cutler, Virginia  
David, Ola  
David, Ralph  
David, Vivian  
Davis, B. - Director  
Davis, Beatrice  
Davis, Bernice  
Davis, Raymond  
Edson, Clair  
Favior, Frank - Treasurer  
Farrier, Wiona  
Fisher, Robert  
Henderson, Florence E. - Teacher  
Holly, Roberta  
Holly, Stuart  
Jones, Albert  
Jones, Gordon - Moderator  
Jones, Vera  
Martens, Maynard  
Martens, Rosina  
Newman, Lloyd  
Shahan, Icy  
Shahan, Sisler  
Seigel, June  
Smith, Lyle  
Stevens, Doris  
Stevens, Dortha  
Stevens, Nelson  
Valentine, Wayne  
VanEno, Joseph  
West, Arlene  
West, Una

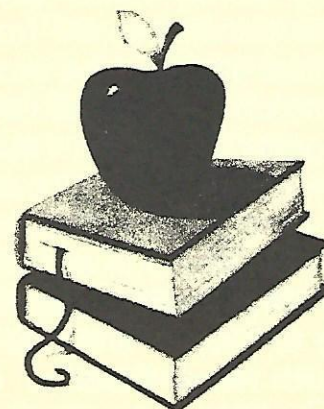
## GROVE SCHOOL

Class of Five, District No. 8, Eighth Grade

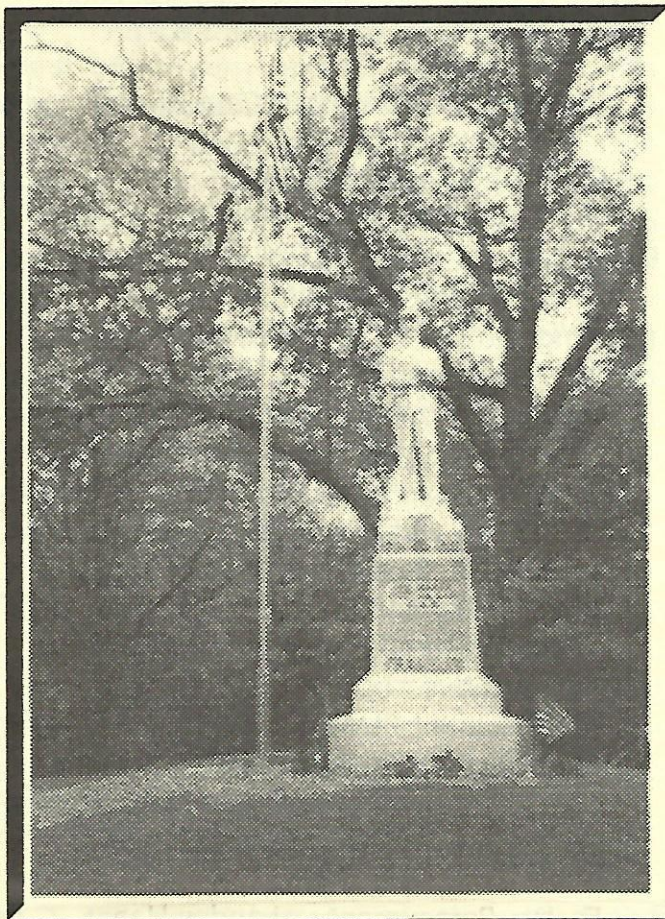
Below is the program of the commencement exercises in school district No. 8, Essex, **Miss Emma Harvey**, teacher:

Processional March  
Prayer - Rev. A.T. Luther  
Song by Class, *Somewhere*  
Instrumental Solo, *When the Stars Begin to Peep* - Lura Parr  
Class Poem, *Step by Step*  
Essay, *Step by Step* - Lura Parr  
Vocal Solo, *Why do Summer Roses Fade?* -  
Eva May Floate  
Essay, *Not How Much, but How Well* -  
Leslie Matthews  
Song, *The Cuckoo* - 3rd Grade  
Essay, *A Cruise in an Air Ship* -  
Eva May Floate  
Instrumental Solo, *Sweeter Than all the Roses* -  
Lura Parr  
Vocal Solo, *Sweeter Than all the Roses* - Eva  
May Floate  
Essay, *Perseverance* - Landes Haas  
Recitation, *The Bluebell* - 4th Grade  
Vocal Solo, *Loving Nina May* - Kitty Belle Floate  
Flag Drill  
Essay, *Night Brings out the Stars* - Kitty Belle  
Floate  
Presentation of Diplomas  
Song by Class, *Good Night*

The Clinton Republican, 7 June 1900







CIVIL WAR MONUMENT  
(RESTORED)  
Wacousta Cemetery  
Watertown Twp., Clinton Co., MI  
June 2002

## DANIEL HANDY'S STONE

The government-issued gravestone for Civil War veteran Daniel Handy is now in place in the Beach Cemetery in Essex Twp. He joined from Lebanon Twp. at age 38 to serve in Co. G, 5th Michigan Cavalry Volunteers and his grave was previously unmarked. Betty Driscoll and the SUVCW worked to have this veteran's burial site finally identified.

## HARMONIUS HAYES

(Contributed by Douglas Armstrong, Past  
Commander G.W. Anderson Camp No. 58,  
SUVCW)

The grave of Civil War Veteran, **Harmonius Hayes**, in the East Plains Cemetery has been marked recently with a government headstone. On Saturday, May 18, 2002, the G.W. Anderson Camp No. 58, Sons of the Union Veterans of the Civil War, conducted a dedication ceremony to pay tribute to his service.

Hayes was born 13 Sept 1845 in Herkimer Co., NY. On 21 Dec 1863 age 18, he enlisted in Co F 16<sup>th</sup> New York Heavy Artillery at Watertown, NY. He had light complexion with blue eyes and light hair and was 5' 9" tall. He listed his occupation as "farmer." While in service he was shot through the knee at Seven Pines near Cold Harbor, VA, which caused him lifelong pain and lameness. He took residence in Matherton, Clinton Co. [sic], MI, and was a member of the Hubbardston Post of the Grand Army of the Republic. He died 23 Dec 1929, age 84.

## UNION HOME CEMETERY

The Genealogists of the CCHS have just published an updated survey of the Union Home Cemetery. Several members read the stones there in May 2001. Betty Driscoll did some additional research and typed all the data. The publication (44 pages, unbound) is available at the archives for \$10. Please add \$2 if you want a copy mailed.





# ARCHIVES NEWS

## 1930 CENSUS

Microfilm reels of the 1930 census for Clinton, Ingham, Shiawasee, Gratiot, and Ionia Counties, have been ordered for the archives. **Marilyn Crumbaugh, Tom and Netta Thiel,** and **Rowlan Smith** generously donated the funds to acquire these films which should be available for use by the end of June.

## NEWSPAPER MICROFILM

Memorial Fund money was used towards the purchase of 18 microfilm reels of the *St. Johns News*. The newspapers on these reels span the time period of Apr. 1892 through July 1923. The accumulated money was given in memory of past members, **Dorothy (Beck) Cressman, Esther (Green) Crosby, Arlene (Lowe) Lounds, Eleanor (McKinney) Moon, Goldie (Stoy) Moore, John Rumbaugh, Janet (Sturgis) Snyder, Wilma (Cowles) Sowle.**

## QUERIES

- \* Submitted by Nancy Howell, 50 Delora Drive, Akron, OH 44319. Has photos relating to James M. & Emma (Corp) DeWitt family of Ovid and information on the Brittain and Corp families of Summit Co., OH. Looking for anyone interested in these families.
- \* Submitted by Dale Wheeler Plume, 3637 Wirgau Road, Rogers City, MI 49779: Seeking information on Nellie Lawrence Wheeler Palmer, b 23 Aug 1883 - d 15 Nov 1971, Bunnell, FL; buried DeWitt Cem. with Alfred Minot Wheeler 8 Oct 1877 - 16 Dec 1935

## IT'S A WEBPAGE!

See us on the internet at

[www.dewittlibrary.com/cchs/](http://www.dewittlibrary.com/cchs/)

Through the courtesy of the DeWitt Public Library we now have a presence "on the net."

# GENEALOGY STAMP

(edited from the Michigan Genealogical Council Newsletter, Vol 26 Issue 1 & 2)

The Michigan Genealogical Council has twice written to the Citizens Stamp Advisory Committee requesting consideration of a stamp honoring genealogy. The Federation of Genealogical Societies' Board endorsed the idea and some other societies have written supporting letters. It is believed that letters from individuals carry more weight than those from organizations. Anyone who feels this is a worthwhile project and would like to support the issuance of a genealogy/family history stamp is encouraged to write a letter stating his/her reasons. Letters should be addressed to:

Earlene Flemming  
Citizens Stamp Advisory Committee  
US Postal Service  
475 L'Enfant Plaza SW Room 5670  
Washington DC 20260-2437

## RECENT ACQUISITIONS

- 📖 Civil War document certifying that G.W. Stimson served in the Army of the Tennessee.
- 📖 My Scrapbook on the Bath School Bombing of May 18th, 1927, by Gene Wilkins, 2002.
- 📖 St. Johns Central School 8th grade graduating exercise program, Jun 22, 1898
- 📖 Pedigree chart of Joyce Carol (LaFlame) Laird.
- 📖 Pedigree chart of Loyal James Laird.
- 📖 Official Michigan Social Register, 1965.
- 📖 The Sowle Cemetery Record of Burials, 1924-1933.
- 📖 Minutes of the Union (Sowle) Cemetery Association of Maple Rapids, 1910 - 1943
- 📖 Descendants of George Johannes Wagner.
- 📖 Descendants of Upton Shaw.
- 📖 Monroe School photo - Students & Teacher ca 1900
- 📖 Monroe School photo - Students & Teacher ca 1924
- 📖 Monroe School building ca 1915
- 📖 VanAmburg family photos.



## CEMETERY RESTORATION

Benjamin Franklin once said, "Show me your cemeteries, and I'll tell you what kind of people you have."

Well, I can tell you, Clinton County has very good people. After just four years, the Clinton County Cemetery Restoration Project, sponsored solely by donations of labor and money, has returned eleven cemeteries to pristine condition. We are currently working to make that number an even dozen.

This project is about respect for the dead. It is about respect for the families and ancestors of those buried on hallowed ground. It is about preserving history. And it is about a deep-seated pride in our community and selves. It is a reflection of the kind of people who have sponsored this project, of those who request work on an area cemetery, and of the people who toll every week under adverse conditions to make it happen.

Mr. Franklin, we've shown you our cemeteries; And therein, you see our people.

It is with great pride that we announce the completion of the Prairie and Lowe Cemeteries of Essex Twp. These projects stand as a monument to the 16 or so people who have shown up most weeks to help.

We're now working in the Sowle Cemetery and expect to spend most of July there. The East Hubbardston Cemetery is the last project of the year.

We would like to express our continuing gratitude to the General Motors Job Bank for the loan of their employees. And of course, I would like to also personally thank "Corky" Bernard Chamberlain, Jerry Myers and Ray Schultz for their unwavering commitment to the success of this project: these are Four Star guys – one for each year of service.

Inquires should be directed to Corky Chamberlain at 989-224-4284 or Jerry Myers 989-593-3437. Or to me via email, [bdriscoll@voyager.net](mailto:bdriscoll@voyager.net).

Betty Driscoll, Project Coordinator

## SURNAMES

- K. Stowe, P.O. Box 98, Elk Rapids, MI 49629  
**Hufnagel, Trieweiler, Sohn & Hayes.**
- Joyce C. Laflame-Laird, 101 Bejac Circle Drive, Battle Creek, MI 49017. [jcflame@Ameritech.net](mailto:jcflame@Ameritech.net)  
**Keeney/Keeny, Smith, Frost, Warren & Marrery.**
- Joyce Holbrook, 123 Thompson Street, Springfield, MA 01109- **Keiser, Wideman, Barrus, Grubaugh & Nichols.**
- Bertrand McPherson, 652 Westerly Drive, Lima, OH 45805-2934 - [LFTY@prodigy.net](mailto:LFTY@prodigy.net)  
**McPherson, Ouderkirk, Carter, Russell, VanSickle, Badgerow, Brown & VanScoy.**
- Betty Driscoll, 9394 W. Silver Lake Road, Mears, MI 49436, [bdriscoll@voyager.net](mailto:bdriscoll@voyager.net) **Money Penny, Snyder, Barnes, Garte & Jones.**
- Alice Ward, 531 S. Francis Avenue, Lansing, MI 48912-3815 - **Parks, Homer, Morris, Smith, Emma Sargent & Lavina Langins.**
- Georgia Haines - 0031 Chaparral Circle, Glanwood Springs, CO 81601- **Parks, VanAmburg, DeHaven, Patrick & Morris.**
- Debra Trinter, 2644 Shanad Road, Las Vegas, NV 89146 [trinter1@ix.netcom.com](mailto:trinter1@ix.netcom.com)  
**Sconday/Sontag, Weber, Heyer, Rademacher & Ackerman.**
- Betsy J. Randall - 10462 E. 64<sup>th</sup> Street, Reed City, MI 49677, [dbrandall@jackpine.com](mailto:dbrandall@jackpine.com)  
**Silvernail, Sitts, Perry, Tompkins & Guyer/Gier.**
- Gerald Benedict - 2525 Aspen Way, Sandpoint, ID 83864 [geraldb@mickon.net](mailto:geraldb@mickon.net) **Timothy Pettit, Catherine Annis, Hiram Benedict, Mary Ely, Matthew Benedict, James Eli Jones.**
- James C. Wood, 2323 Six Mile Road, Remus, MI 49340 [peach.power-net.net](http://peach.power-net.net) **Timothy Sargent, Johnathan H. Smith & James Wood.**
- Myrna VanEpps - 9731 Riverside Drive, Grand Ledge MI 48837 [nvanepps@aol.com](mailto:nvanepps@aol.com) **VanEpps, Wakefield, Sliker, Thurston & Bevins.**
- Jacquelyn Danalewich - 129 Executive Court, Westerville, OH 43081 [LEWICH@AOL.COM](mailto:LEWICH@AOL.COM)  
**Vincent.**
- Kim Sperry - 8204 US 27, DeWitt, MI 48820 [kwsperry@aol.com](mailto:kwsperry@aol.com) **Eleazer Sperry, Winslow, Rossow, Witt, Lietzke & Klever/Klaver.**
- Windsor Martha - 906 E. Sturgis St., Apt. #5 St. John, MI 48879 - **Sarah & Livonius Bond, Beulah Ballentine, Peckil & McCracken**



## WILLIAM KEENY/KINNE

(submitted by Joyce C. LaFlame-Laird, Mar. 2002)

I have put this in a condensed form to point out the ties that we still have with Clinton County. William Keeny/Kinne came to this country in 1630, landing near Cape Ann, MA. He came from England near Kings Lynn. He was one of the original settlers of New London, CT, and the family stayed there for about six generations. Then around 1817 Joseph Keeney took his family to LeRoy, Genesee Co., NY. A son, Jonathan Bishop Keeny, who was about age 2 at the time of the move, came to Lenawee Co., MI, with his brother, James, in the 1830's. He there married Amanda Mallery whose family had come from Mass. in 1839. The brothers settled in Franklin Twp. first. In 1850 Jonathan built a house in Cambridge Twp. which still stands.

James and Amanda had 13 children altogether, my great-grandfather being James Allen Keeney born in 1850. He married Genevieve M. Warren in 1878 and they moved on up to Clinton Co. His brother, John, did also and was prominent as a sheriff and townsman in St. Johns in later years. James and Jennie, as she liked to be called, had three girls.

My grandmother, Florence Keeney, was the oldest, born in 1881. She trained as a seamstress and helped to put the other two girls through normal school. They both became teachers. Florence married Roy F. Smith in 1907. He was born near DeWitt in 1882 and they had grown up in the same neighborhood in Riley Twp. Roy's parents were Elmer Smith and Emma Frost who lived in Clinton Co. and are buried at South Riley Cemetery. Roy's two brothers, Ray and Harry, both stayed in the area. Ray married Mabel Brace; Harry married Helen -----.

Roy and Florence had three children: Phyllis L. (b 1909 - d 1994); Kenneth L. (b 1912 - d 1984); and a third daughter who is still living. Phyllis was my mother. She had three children who are still living.

Florence's other two sisters, Ethel (b 1888) married John Hokanson. They moved to Flint where he was an engineer with General Motors.

They had one daughter, Eloise. Nellie (b 1897) married Norman Blemaster and they lived near Maple Rapids on a farm. They had five boys. While the youngest was a baby, Norman was killed in a construction accident at his home. Nellie later became the postmistress of Maple Rapids for a long time.

## Keeney Family Bible

### *Marriages*

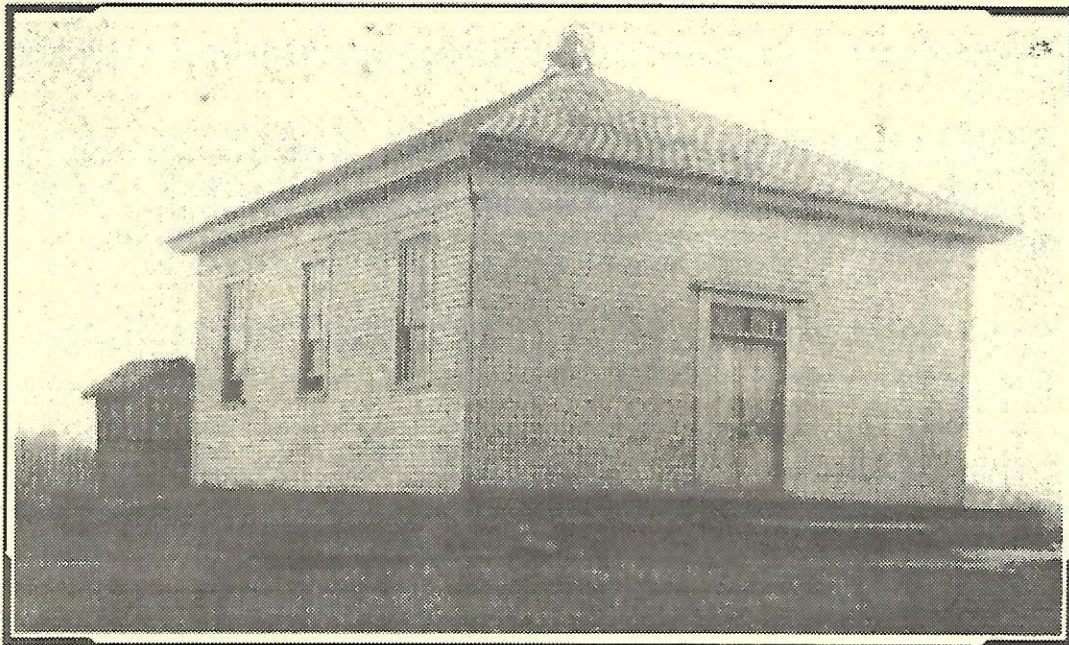
Jonathan Bishop Keeny Amanda Mallery 1 May 1839  
Ellen Amanda Keeny James Furgason 21 Aug 1864  
Carrie A. Keeny Frederic Groger 26 Aug 1879  
James Allen Keeny Genevieve Warren 3 Apr 1878  
Alanson M. Keeny Mary J. Dewey 20 Mar 1882  
Nancy Sophia Keeny John D. Holmes 7 Nov 1865  
Nicholas Bishop Keeny Mary Boss 5 Jul 1880  
Joseph Zalmon Keeny Nancy Alderdyce 23 Sep 1867  
John W. Keeney Ida Hays 5 Mar 1879

### *Birth Death Age at Death*

Jonathan B. Keeny b 15 Mar 1815 d 21 Apr 1897 82y  
1m 6d  
Amanda Mallery 27 Mar 1822 9 Feb 1885 62y 10m  
10d  
Mary Ann Keeny 25 Aug 1840 4 Feb 1850 9y 5m 9d  
Ellen Amanda Keeny 21 Aug 1842  
Nancy Sophia Keeny 30 Sep 1844 10 Jun 1902 57y  
8m 10d  
Joseph Zalmon Keeny 23 Sep 1846  
Albert Allen Keeny 3 Oct 1848 26 Jan 1850 1y 3m  
23d  
James Allen Keeny 14 Nov 1850 29 Jan 1921 70y 2m  
10d  
John William Keeny 16 Feb 1853 29 Jan 1910 56y  
11m 13d  
Nicholas Bishop Keeny 7 Feb 1855  
Alanson Mallery Keeny 19 Dec 1856  
Edward Carroll Keeny 18 Mar 1859  
Charles LeRoy Keeny 21 Dec 1861 17 Apr 1862 3m  
26d  
Carrie Adel Keeny 25 Jul 1863  
Marshall Heber Keeny 28 Feb 1865 5 Apr 1864 1m  
7d

Note: Joyce LaFlame also sent her updated pedigree chart for the archive files. The recent chart expands on the one which was printed in Clinton Co. Trails, March 1997, Vol. 12 No. 1.





**North Eagle School  
1921  
District #9, Section 26, Eagle Township,**

- ✈ **The Archives of the Clinton County Historical Society** are located at 16101 Brook Road in the DeWitt Twp. Community Center. Volunteers are there to give research assistance from 9 a.m. to 4 p.m. on Mondays and Tuesdays and from 2 p.m. to 6 p.m. on Thursdays & Fridays. Phone: (517) 482-5117 ext. 142. E-mail address:
- ✈ **The Genealogists of the CCHS** meet the first Monday of each month at 7:30 pm in the Firstbank community room, located downtown St. Johns. The **Historical Society meetings** are held at 7:00 at Firstbank, the first Monday of January, April, July & October.
- ✈ **The Paine-Gillam-Scott Museum** is located on the west side of the Courthouse Square in St. Johns. Open April 1 - Dec 31. Sunday 1:00-4:00 p.m. & Wednesday 2:00-7:00 p.m.

**MEMBERSHIP APPLICATION/RENEWAL-2002**

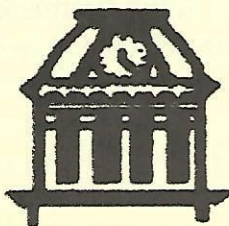
**LIST 5 NAMES YOU ARE RESEARCHING**

|                                     |       |
|-------------------------------------|-------|
| Mr./Mrs./Miss _____                 | _____ |
| Address _____                       | _____ |
| City _____ State _____ Zip _____    | _____ |
| Phone _____ New _____ Renewal _____ | _____ |
| E-Mail Address _____ Date _____     | _____ |

ANNUAL DUES to join both the Clinton County Historical Society and the Genealogy Committee are \$10 single and \$15 a couple/family. Membership is based on the calendar year and includes a subscription to the quarterly newsletter, *Clinton County Trails*. Checks should be made payable to the Clinton County Historical Society and mailed to P.O. Box 174, St. Johns, MI 48879. Genealogical queries should be addressed to: Genealogists of the Clinton County Historical Society, P.O. Box 23 St. Johns, MI 48879



- ❖ **Your membership is greatly appreciated.** You are an important part of the Clinton County Historical and Genealogical Societies! You make it possible!! You help us preserve resources for future generations.
- ❖ Readers are encouraged to submit articles, ideas, and information to the editor for consideration. All material is subject to editing.
- ❖ Notice: the September Issue will focus on 4-H, celebrating 65 years in Clinton County, Michigan and 100 years nationwide. We would appreciate any interesting stories and/or photos. Please send any articles to the Genealogists of Clinton Co., P.O. Box 23, St. Johns, MI 48879
- ❖ Announcing the Clinton County Historical Society election of officers on July 1st. Any volunteer candidates are welcome to present their name to the selection process held at the regular meeting at Firstbank community room, downtown St. Johns at 7:00 p.m.



**CLINTON COUNTY  
HISTORICAL SOCIETY**

P.O. Box 174  
ST. JOHNS, MICHIGAN 48879

St. Johns, MI  
Permit  
No. 104  
Non Profit Org.  
US POSTAGE