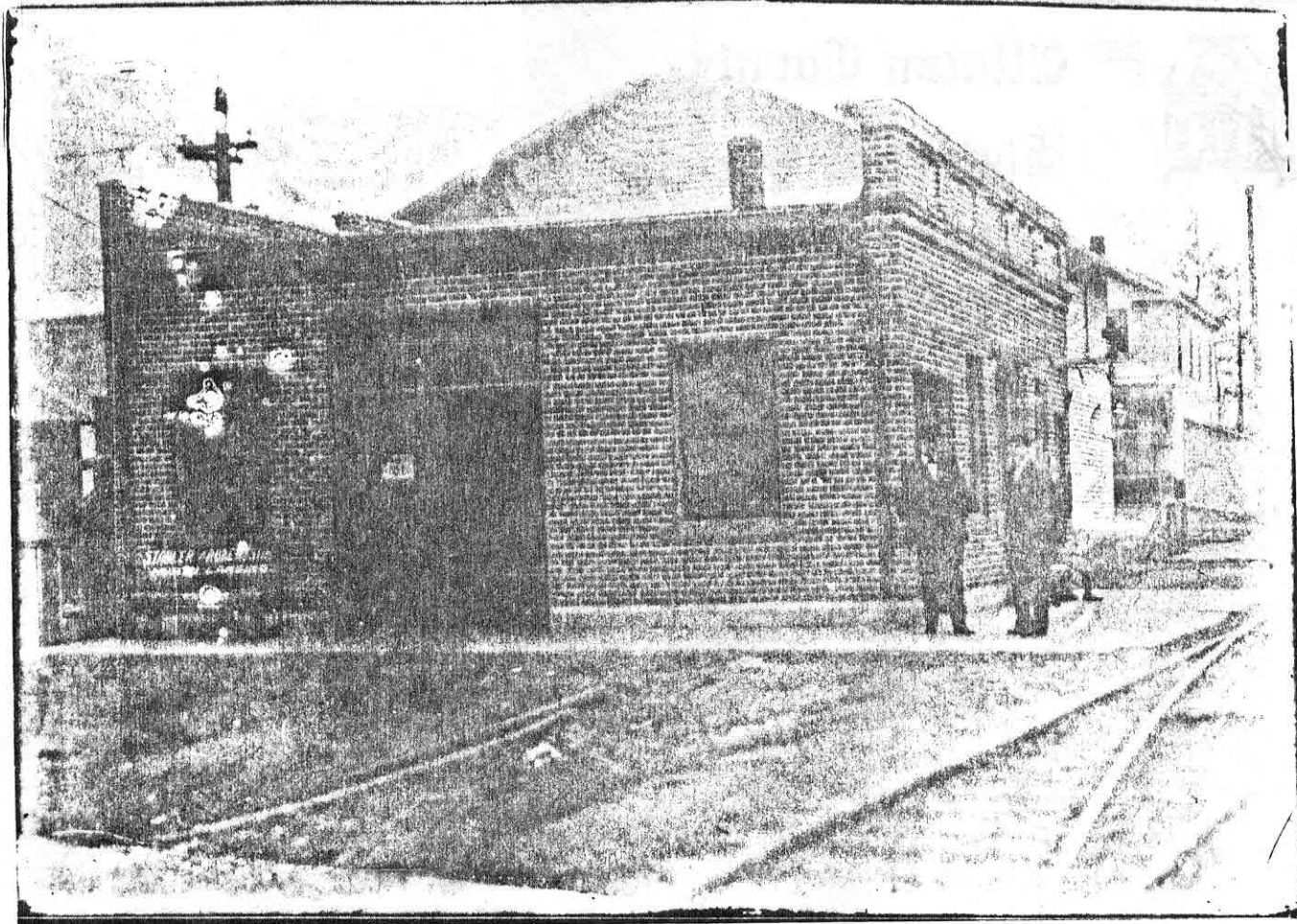


Vance, John	6	Wells	16	Wineger, Agelia	2
Vincent	14	Welton, Doris	11	Winship	14
Voisinet, Louis J.	14	Welton, Flossie	11	Wolcott	14
Voorhies, John	5	Welton, Gerta	11	Wood Mill, The	8
Wacousta Village	16	Welton, John	11	Woodbury, John D.	18
Wagner, John	5	Wessler, Lyndon	11	Worden	14
Walbridge	16	Westbrook, James	5	Worden, Thomas	18
Walcott, J. S.	5	Wetzel, H.	6	Wright	14
Waldo, C. F.	6	Wheedman, George	6	Wright, Lyman	15
Waldron	14	Whitaker, Eda	2	Wright, W. C.	2
Walker, - S.	5	Whitaker, Hattie	2	Wyman	14
Walker, Nora	2	Whitaker, Issadore	2	Yallup	23
Walker, Rosetta	2	Whitaker, May	2	Yeo	14
Walton, - W.	5	Whittaker	14	Yoradon, James	5
Ward	14	Whitten	14	Yost	14
Warner	14	Wilcox	14	Youden	14
Warren	14	Wilcox, Hiram	17	Young	14, 16
Warren, Agnes M.	6	Wilcox, O. P.	5	Youngs, Bertha	6
Warstler	14	Wiley	14	Zacharias, Maude	14
Watertown Center School	11	Willard, S. F.	5	Zuver	14
Watson, R.	5	Williams	14		
Watters	16	Williams, Fred R.	6		
Watterson, Virginia J.	21	Willroth	14		
Webster	14	Willyoung	14		
Weidmier, George	6	Wilson	14, 16		
Welch	16	Wilson, Mary A.	4		
		Wilson, Warren	4		



OLD INTERURBAN STATION DEWITT CITY

## Important Dates To

Remember

The January Meeting of the Genealogists of Clinton County will be at the Capitol Savings and Loan Bank, January 9, 1989. This is a correction of the January 2 date in the last Clinton Independent.

The Payne-Gillam-Scott Museum will be open December 27, from 1:00pm till 5:00pm., December 28, from 2:00pm till 8:00pm., musical string music from 7:00pm till 8:00pm.

The Museum will also be open January 3, 1989 from 1:00pm till 5:00pm., also January 4, 1989 from 2:00pm till 8:00pm., music from 7:00 till 8:00 from an antique music box.

The Museum will then be closed till April 2, 1989.

A St. Johns Home Show is being planned for May, 1989. A planning meeting will be held January 5, 1989 at the museum at 7:00pm. Home Tour chairpersons are Mike and Gretchen Muehlenbeck.

There will also be a Museum Advisory Board meeting at the museum January 10, 1989.

John and Catherine Rumbaugh are to be commended for their caring and time expended towards the Museum. Their dedication is appreciated by all those who have enjoyed seeing Clinton County's past unfold in the Payne-Gillam-Scott Museum.

Wilma Sowle should be remembered for her many projects in the Archives. We all wish her well in her retirement.

We need, too, to remember Earl Fohl who passed away in the last part of this year. Earl spent long hours typing for the Genealogists.

Merry Christmas and A Happy New Year.



# Clinton County Historical Society

P. O. Box 174

Saint Johns, Michigan 48879

ST. JOHNS, MI.  
PERMIT  
No. 104  
Non-Profit Org.  
U.S. POSTAGE  
PAID