

Published
Quarterly
1991 Vol. 6
No. 1
Jan-Feb-Mar

Clinton County Trails

Co-Editors
Myrna ManEode
Arlene Smith

BARNABELIA

by
Goldie Stoy Moore

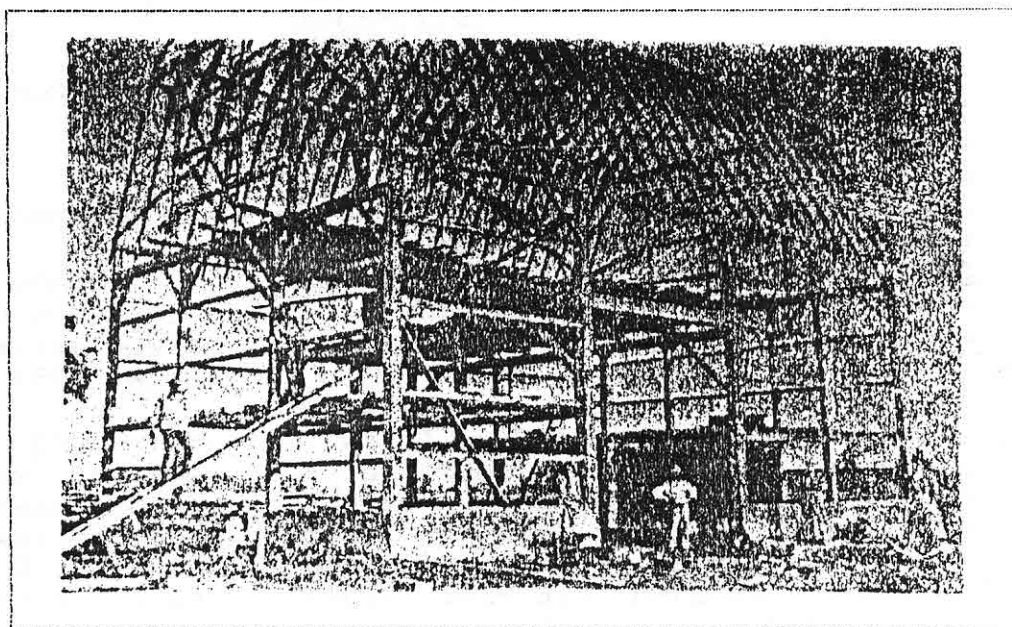
My Uncle, Wm. J Stoy, grew up on a farm on S. Francis Road. This was where he learned to plan and build barns by himself. It was about 1895 and the framework is the only picture we have of this barn. It burned down a few years ago.

Wm. J. Stoy and his brother, Charles C., built their first barn on their parents farm on Francis Road about 1900 and by 1905 Wm. had built many barns, and continued building and repairing until his death in 1934.

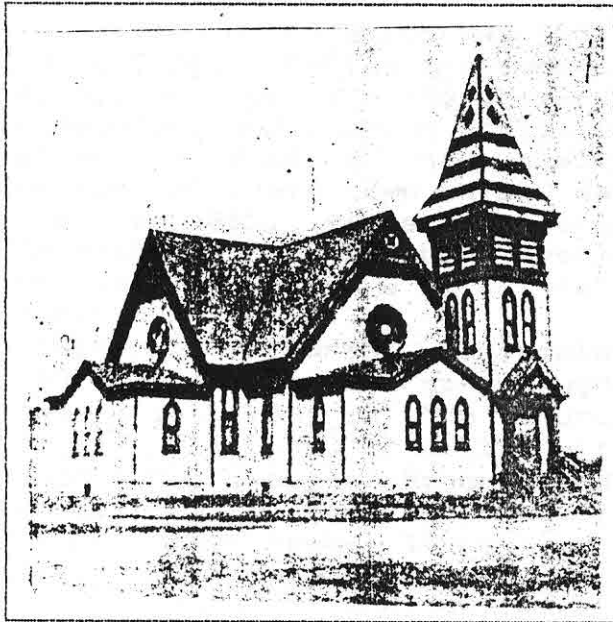
Some of the members in his crew down through the years were: Charley Stoy; Gust Martzke; Frank Parks; John Drumm; Mick Hopp; Newton Newman; Jake Stiffler; Arnold

Krumm; Leo Martzke; Fred Bandt; Hank Bleis; Dat Stevens; Fred Schaefer; Chas. Shumaker; Albert Diehm; Wm. Tiedt; Roger Pratt; A. Hildreth; Roy Hamelton & Dean Sperry. There were several others I can't remember or don't know about.

A few of the barns I have taken pictures of are: Chas. Summers on Airport Rd.; Charles Bauerle on Clark Rd.; Steve Krasutzky on Grove Rd.; W.J. Stoy on Francis Rd. and Lou Brown on DeWitt Rd. There are several more barns to take pictures of this summer to complete my project of taking pictures and getting information on the barns my Uncle and his crew built in Clinton County.



Uncle Bill's Learning Barn



ELSIE METHODIST CHURCH

Elsie - December 30, 1883
by W. T. Tillotson
[abstracted from his manuscript]

Elsie Class was first formed at the log schoolhouse [Green School] one and a half miles south of Elsie in the year 1850 with Brother Roberts as leader.

In the year 1852 its place of meeting was changed from the log schoolhouse south to a frame school house 3/4 of a mile west of the village of Elsie and A. J. Linman appointed leader, also its place of preaching. Preaching [occurred] once in two weeks, alternating with the Free Will Baptist denomination; also prayer meeting [was held] every Thursday evening which have been sustained ever until the present time although there were times when the numbers was few, sometimes but two.

In the year 1857 its place of meeting was again changed to 1/4 of a mile north of the village by the removal of the school house to that

place.

Soon after, as the country became settled, the congregations increased accordingly so that the school house was often too small to accommodate those who attended. So in the year 1858 measures were taken towards the erection of a church by hewing the timber for a frame and drawing it onto the site, also some lumber, as Mr. Aaron Sickels had donated three village lots to the Society as church property; but the frame was not erected until in the fall of 1859 as the members of the class at that time were not blessed with money to give towards the building of the church, but each gave labor and material as they had time or the materials.

In the summer of 1860 they succeeded in getting the roof on and the floor laid, also had boarded up the sides of the building with poor lumber so as to break the force of the wind, yet gave good ventilation. For seats we cut down a dry pine and sawed it into blocks of a proper length that, with them set on end and a board laid on them, made a very good seat.

On July 8th, 1860, we held our first meeting in the new church, and we continued to use it for a place of meeting from that time on--only during warm weather the first year as there was too much ventilation for cold weather. But I think that meetings were held in the Church in the winter of '62 and '63 as the house was sided during the summer of '61.

In 1864 the work of building was completed, and on Nov. 16th, 1864, the church was dedicated to the worship of God, sermon by Elder Burns. There was no begging as there was not one cent of indebtedness upon the church.

A Union Sabbath School was

(con't, Elsie Church)

organized in '53 which was run as a Union School during the summer of each year until the church was completed, and a Union School until after the Baptists had erected a church of their own which was in the year 1865, since which time a Sabbath School has been sustained the year round as a M. E. Sabbath School.

Since the church was completed, there has been a organ bought, a new pulpit put in the church, a church bell hung to call the tardy ones to Sabbath School and to meeting; also some sheds built to protect the teams (from sun and storm) of those coming to worship from a distance. And now, as it was thought but to build anew, we have moved the old church back to give place to a new one of more modern style and larger dimensions in order to the better accommodate those who may come to worship. And yet, there are some of us who do not like to leave the old house for it has been our place of worship for many years.

MARRIED OVER 50 YEARS

The Clinton Republican
July 31, 1902

Charles L. Wise of Duplain reports couples married over 50 years, in his township.

<u>Mr. & Mrs.</u>	<u>Yrs.</u>
ACRE, Alexander -	51
DEVEREAUX, John -	51
DODGE, Christopher -	62
DOTY, George -	57
FOSS, Philip -	59
LEVEY, Allen -	51
LOWE, Joseph -	51
MOORE, James B. -	51
SNELLING, Edward -	52
STEBBINS, Henry -	55
TEETER, Hamilton -	51

CLINTON COUNTY PIONEER CERTIFICATE

Alban John Arens of Fowler, a descendant of John Peter Arens, received a Clinton County Pioneer Certificate. These certificates were offered by the Genealogists of the Clinton County Historical Society to descendants of pioneers who were in Clinton County by 1839 as part of the celebration of the county's sesquicentennial in 1989. Mr. Arens submitted the required documentation to prove his descendance from the pioneer as follows:

Alban John ARENS; b 12 Dec. 1933, Fowler, MI; m Eugenia Marina RADEMACHER, St. Mary's, Westphalia, MI, 20 June 1956.

His father: Theodore W. ARENS; b 18 Nov. 1906, Westphalia; m Hildegard/Hildigard THELEN, 29 June 1932, St. Mary's, Westphalia.

His grandfather: Albert ARENS; b 8 Dec. 1872; m Philomena NAU; d 11 Oct 1957; bur St. Mary's Cemetery, Westphalia.

His g-grandfather: Anthony ARENS; b 4 Aug. 1841; m Theresia DIEBOLD, 24 Apr 1866, St. Mary's, Westphalia; d Nov. 1918; bur St. Mary's, Cemetery, Westphalia.

His g-g-grandfather: John Peter ARENS; b 23 Nov. 1806, Altenhundem, Germany; m Anna Cathrina/Katherna PULTE (b 17 Oct 1813), 9 July 1837, St. Mary's, Detroit, MI; arrived in Clinton Co. 1838; d 30 Aug. 1857, Westphalia; bur St. Mary's Cemetery, Westphalia.

